

GAUGE SIPHONS GSV

DESCRIPTION

The ADCA GSV series pressure gauge siphons have been designed to protect pressure gauges from the effect of rapid pressure surges and hot pressurized fluids.

Specifically designed to replace the traditional "pigtail" and other coil designs siphons where it is necessary to eliminate gauge whip and vibration. They operate as cooling elements for liquids and gases in pressure measuring devices.

An isolation pressure gauge cock is recommended to be installed in combination with gauge siphons.

MAIN FEATURES

Complete stainless steel construction.

Compact sturdy design, requires minimum space for installation.

OPTIONS: Different kinds of connections.

USE: Pressure gauge protection on steam, water, compressed air and other fluid systems compatible with the construction.

AVAILABLE MODELS: GSV – stainless steel.

SIZES: 1/2" (male x female).

CONNECTIONS: ISO 228-1.

MATERIAL: AISI 316L / 1.4404.

INSTALLATION: Vertical.

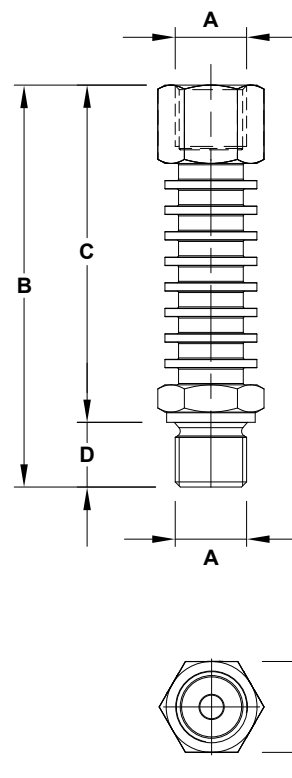
BODY LIMITING CONDITIONS: 63 bar at 400 °C; 100 bar at 120 °C.



GSV

CE MARKING – GROUP 2 (PED – European Directive)

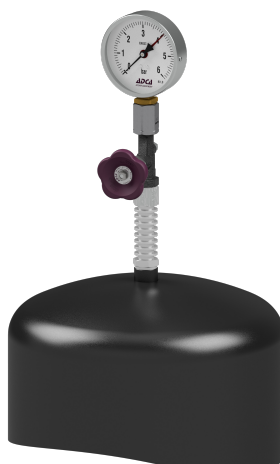
PN 100	Category
1/2"	SEP



TYPICAL INSTALLATION



Horizontal pipe



Top of vessel

DIMENSIONS

SIZE	A	B	C	D	E	WGT. (kg)
1/2"	1/2"	118	99	19	27	0,5