

MECHANICAL STROKE COUNTERS POP-CT

DESCRIPTION

The ADCAMat POP-CT stroke counter is designed to monitor the operation of pressure operated pumps in open vented systems. The device is mechanical and operates by change in pressure inside the pump which it is connected to. It can be used to determine the amount of condensate return and establish maintenance intervals.

MAIN FEATURES

Robust construction.
7-digit mechanical display.
No power supply or battery requirement.

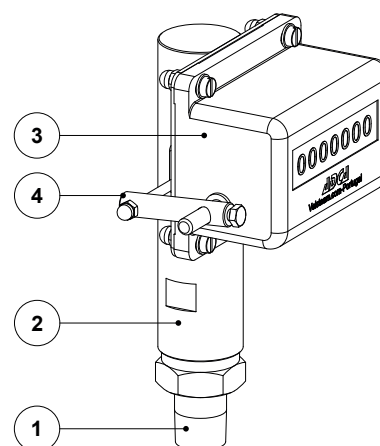
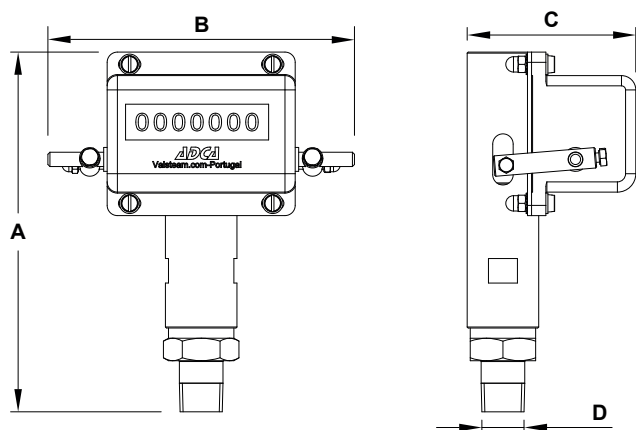
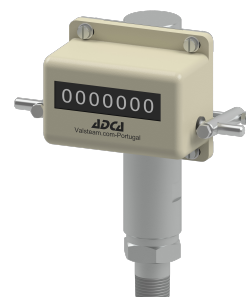
OPTIONS: Battery powered digital stroke counter.

USE: Monitoring or metering of pressure operated pumps.

AVAILABLE MODELS: POP-CT.

CONNECTIONS: ISO 7 R or NPT.

INSTALLATION: Vertical installation, directly screwed onto the pump cover. See IMI – Installation and maintenance instructions.



DIMENSIONS (mm)

MODEL	A	B	C	D
POP-CT	176	150	82,5	1/2"

MATERIALS

POS. N°	DESIGNATION	MATERIAL
1	Connection	AISI 303 / 1.4305
2	Body	Brass
3	Counter	Aluminium
4	Lever system	AISI 304 / 1.4301

LIMITING CONDITIONS

Maximum operating temperature	185 °C
Maximum operating pressure	10 bar
Minimum motive pressure (steam)	4 bar
Minimum motive pressure (air or nitrogen)	3 bar
Minimum system backpressure	700 mbar *

* The pump outlet check valve can be supplied with a stronger spring to compensate in case of lower backpressure. Consult manufacturer.