

SINGLE WINDOW SIGHT GLASSES SW12

DESCRIPTION

The SW12 is a series of single window sight glasses specially designed for installation downstream of steam traps, to monitor their performance such as checking for live steam leakage or blockage. Such devices can also be used for monitoring flow conditions in other applications, particularly in pipelines with liquid medium.

MAIN FEATURES

Compact and cost-effective.
Single window design.
Borosilicate glass.

OPTIONS: Mica shield discs for use with steam.

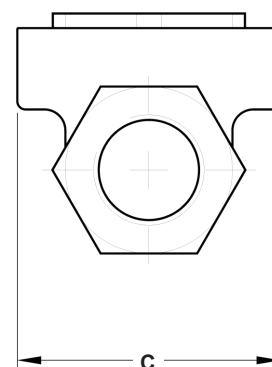
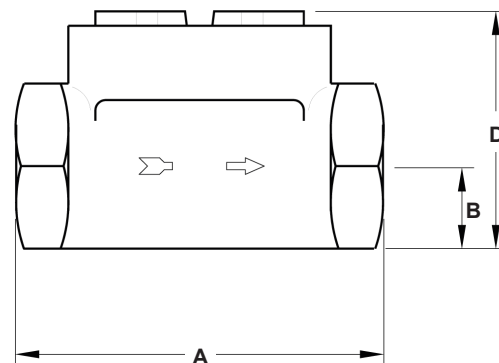
USE: Condensate lines and others.

AVAILABLE MODELS: SW12 – brass.

SIZES: 1/2" to 1".

CONNECTIONS: Female threaded ISO 7 Rp.

INSTALLATION: Horizontal or vertical installation.
See IMI – Installation and maintenance instructions.



| LIMITING CONDITIONS | |
|-------------------------------------|--------|
| PMO – Maximum operating pressure | 12 bar |
| TMO – Maximum operating temperature | 150 °C |

| DIMENSIONS (mm) | | | | | |
|-----------------|----|----|----|----|-------------|
| SIZE | A | B | C | D | WEIGHT (kg) |
| 1/2" | 80 | 16 | 62 | 52 | 0,6 |
| 3/4" | 88 | 19 | 62 | 57 | 0,9 |
| 1" | 88 | 23 | 62 | 60 | 0,85 |

| MATERIALS | | |
|-----------|----------------|----------------------------|
| POS. N° | DESIGNATION | MATERIAL |
| 1 | Body | Brass EN12165 / CuZn39Pb2 |
| 2 | Glass nut | Brass EN12165 / CuZn39Pb2 |
| 3 | * Gasket | Stainless steel / Graphite |
| 4 | * Window glass | Borosilicate glass |

* Available spare parts.

