

## AIR AND GAS FLOAT TRAPS FA45.3 (Stainless steel ; 1 1/2" and 2" – DN 40 and DN 50)

### DESCRIPTION

The ADCA FA45.3 is a series of fully automatic ball float traps specially designed for condensate drainage in compressed air and gas systems.

Typical applications include aftercoolers, separators and compressed air mains.

### MAIN FEATURES

Modulating discharge.

Unaffected by sudden or wide load and pressure variations.

Flow direction can be easily changed by repositioning the body in relation to the mechanism and cover.

**OPTIONS:** Equalizing (vent) and drain connections.  
BDV – Blowdown valve.  
AFZ – Anti-freeze device.  
FLL – Float lifting lever.

**USE:** Compressed air and other non corrosive gases compatible with the construction.

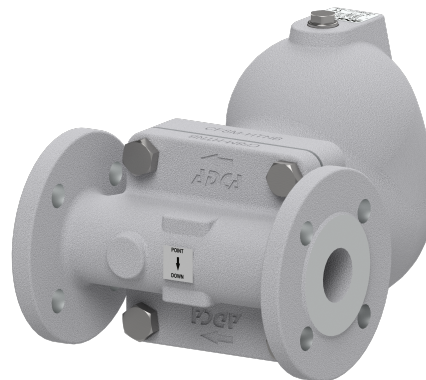
**AVAILABLE MODELS:** FA45.3-4,5 , 10, 14, 21 and 32 – stainless steel.

**SIZES:** 1 1/2" and 2"; DN 40 and DN 50.

**CONNECTIONS:** Female threaded ISO 7 Rp or NPT.  
Flanged EN 1092-1 PN 40.  
Flanged ASME B16.5 Class 150 or 300.  
Socket weld (SW) ASME B16.11.

**INSTALLATION:** Horizontal or vertical installation.

**ΔPMX:** FA45.3-4,5 – 4,5 bar  
FA45.3-10 – 10 bar  
FA45.3-14 – 14 bar  
FA45.3-21 – 21 bar  
FA45.3-32 – 32 bar



#### CE MARKING – GROUP 2 (PED – European Directive)

CLASS 150	PN 40	Category
1 1/2" and 2" DN 40 and 50	–	SEP
–	1 1/2" and 2" DN 40 and 50	1 (CE marked)

#### BODY LIMITING CONDITIONS

FLANGED PN 40 / CLASS 300 *	FLANGED CLASS 150 **	RELATED TEMPERATURE
ALLOWABLE PRESSURE	ALLOWABLE PRESSURE	
40 bar	16 bar	100 °C
33,7 bar	13,6 bar	200 °C
31,8 bar	12 bar	250 °C
29,7 bar	10,2 bar	300 °C

PMO – Maximum operating pressure: 32 bar; TMO – Maximum operating temperature: 250 °C.

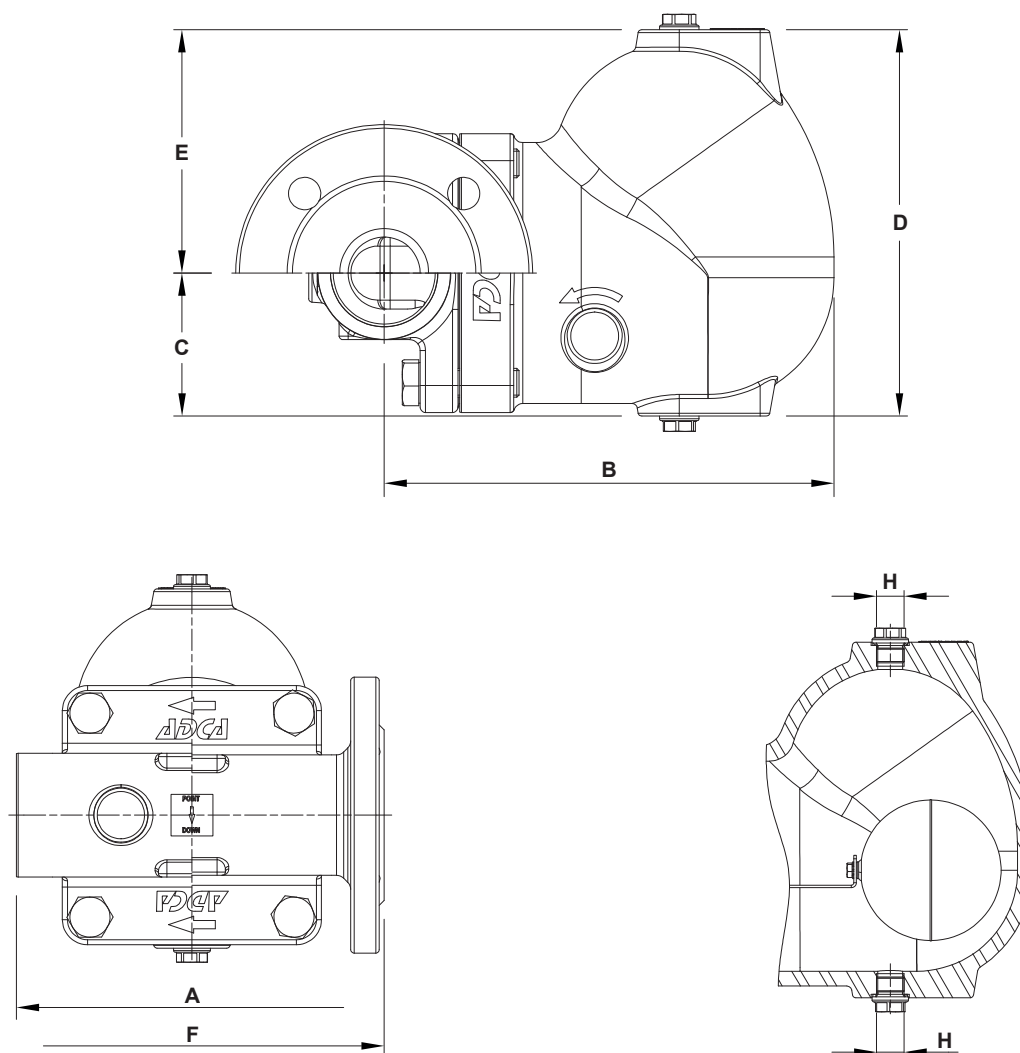
Minimum liquid specific weight: 0,75 kg/dm³.

\* According to EN 1092-1:2018; \*\* According to EN 1759-1:2004.

Body limiting conditions PN 40 or below, depending on the type of connection adopted. Rating PN 40 for threaded, SW and BW versions.

**FLOW RATE CAPACITY (kg/h)**

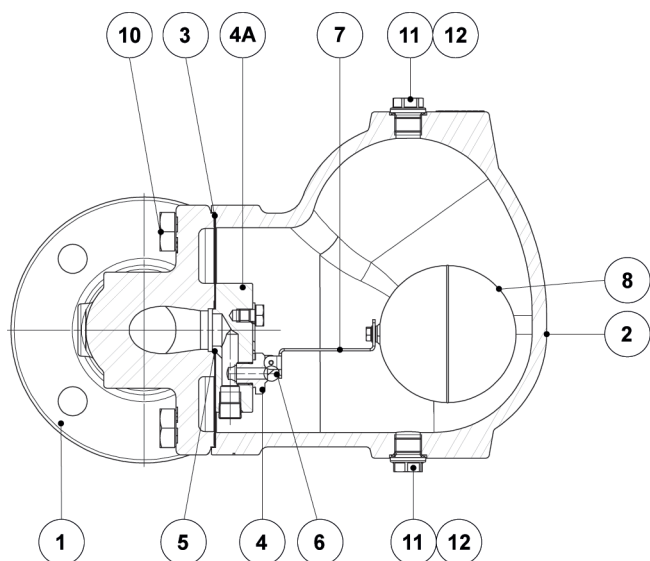
MODEL	SIZE	DIFFERENTIAL PRESSURE (bar)												
		0,5	1	1,5	2	4,5	7	10	12	14	16	21	25	32
FA45.3-4,5	11/2" and 2" – DN 40 and 50	995	1450	1710	2000	2990	–	–	–	–	–	–	–	–
FA45.3-10	11/2" and 2" – DN 40 and 50	505	720	850	1010	1600	1890	2300	–	–	–	–	–	–
FA45.3-14	11/2" and 2" – DN 40 and 50	370	520	610	735	1150	1430	1620	1750	1980	–	–	–	–
FA45.3-21	11/2" and 2" – DN 40 and 50	305	430	515	600	900	1160	1435	1590	1620	1760	1995	–	–
FA45.3-32	11/2" and 2" – DN 40 and 50	175	230	290	340	505	625	745	815	900	955	1125	1250	1480



**DIMENSIONS (mm)**

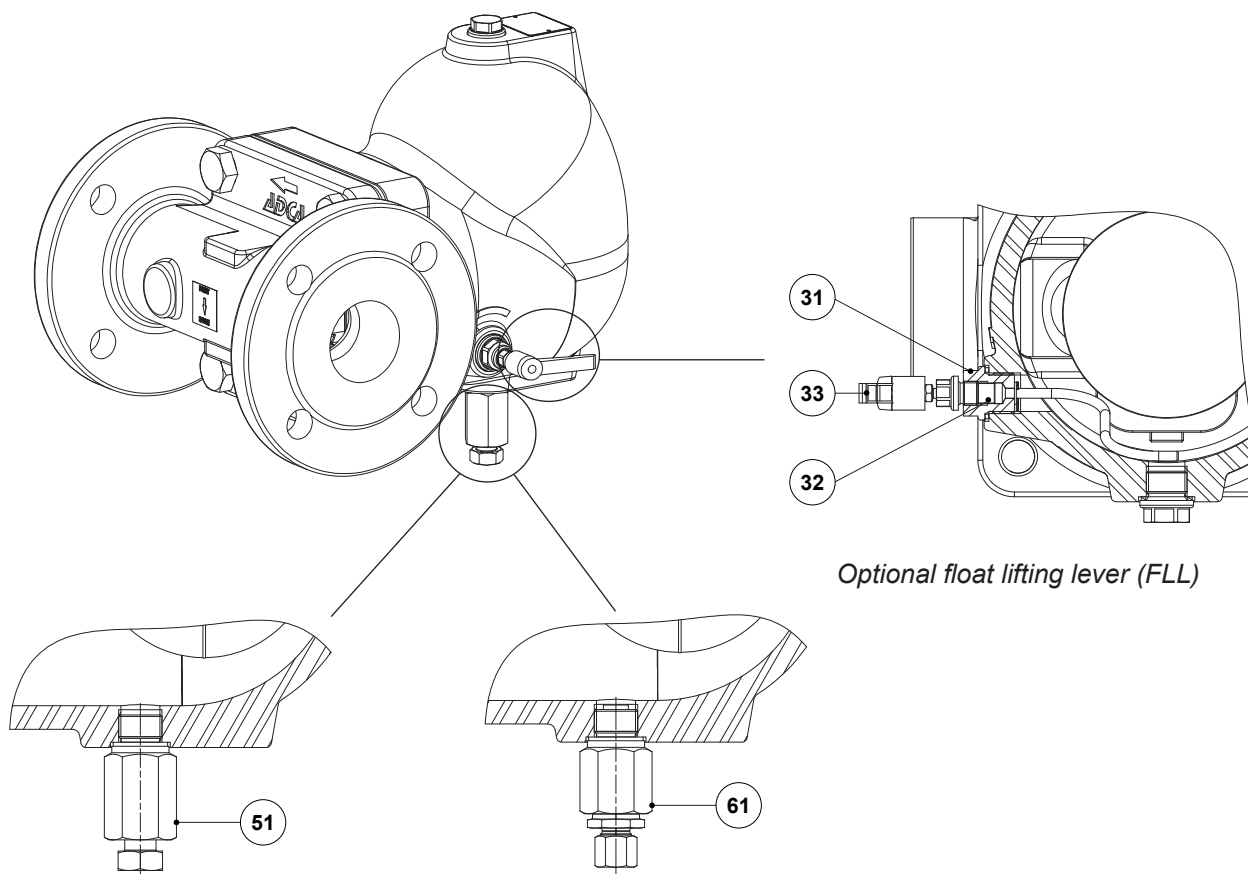
SIZE	THREADED / SW							PN 40			CLASS 150			CLASS 300		
	A	B	C	D	E	H *	WGT. (kg)	F	B	WGT. (kg)	F	B	WGT. (kg)	F	B	WGT. (kg)
11/2" – DN 40	210	250	80	215	136	3/8"	18,9	230	250	21,7	230	250	20,2	230	250	21,5
2" – DN 50	210	250	80	215	136	3/8"	18,2	230	250	23,6	230	250	21,5	230	250	23,2

\* As standard, in versions with EN flanges and female ISO 7 Rp threads, these connections are female threaded ISO 228. In versions with ASME flanges, female NPT threads or SW, these connections are female threaded NPT.



MATERIALS		
POS. N°	DESIGNATION	MATERIAL
1	Body	A351 CF8M / 1.4408
2	Cover	A351 CF8M / 1.4408
3	* Gasket	Stainless steel / Graphite
4	* Seat	AISI 410 / 1.4006
4A	Mounting plate	AISI 316 / 1.4401
5	* Gasket	Graphite
6	* Valve ball	AISI 440C / 1.4125
7	* Lever	AISI 304 / 1.4301
8	* Float	AISI 304 / 1.4301
10	Bolt	Stainless steel A2-70
11	Plug	AISI 316L / 1.4404
12	** Gasket	Copper; AISI 304 / 1.4301
31	Lever mechanism	AISI 303 / 1.4305; AISI 304 / 1.4301; AISI 316L / 1.4404
32	Packing	Graphite
33	Lever	Plastic
51	Blowdown valve	AISI 303 / 1.4305; AISI 316L / 1.4404
61	Anti-freeze device	AISI 303 / 1.4305; AISI 316L / 1.4404

\* Available spare parts; \*\* Not applicable in NPT version.

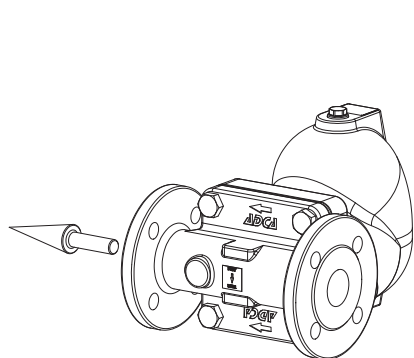


Optional float lifting lever (FLL)

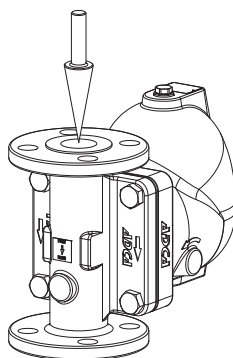
Optional blowdown valve (BDV);  
Manual

Optional anti-freeze device (AFZ);  
Automatic

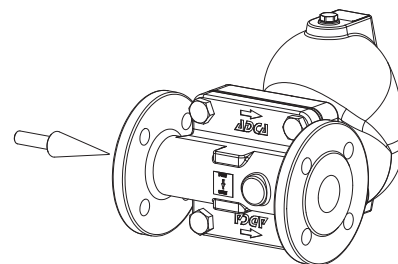
## FLOW DIRECTION



*R - Horizontal from right to left*



*V - Vertical from top to bottom*



*L - Horizontal from left to right*

### ORDERING CODES FA45.3

Model	FA453	2	M	XX	X	IR	A	40	
FA45.3 – A351 CF8M / 1.4408 stainless steel	FA453								
<b>Maximum allowable differential pressure (ΔPMX)</b>									
4,5 bar		2							
10 bar		3							
14 bar		4							
21 bar		5							
32 bar		7							
<b>Valve sealing</b>									
Metal to metal			M						
<b>Cover connections</b>									
None				XX					
3/8" threaded connections on top and bottom, closed with plugs (mandatory if any options are considered)				10					
<b>Options</b>									
BDV and AFZ have specific separated ordering codes, please refer to the appropriate documentation									
<b>FLL - Float lifting lever</b>									
None					X				
Lifting lever on the right side (when facing the steam trap body)					R				
Lifting lever on the left side (when facing the steam trap body)					L				
<b>Flow direction</b>									
Horizontal from right to left – standard						IR			
Horizontal from left to right						IL			
Vertical from top to bottom						IT			
<b>Pipe connections</b>									
Female threaded ISO 7 Rp							A		
Female threaded NPT							C		
Socket weld (SW) ASME B16.11							H		
Flanged EN 1092-1 PN 40							N		
Flanged ASME B16.5 Class 150							U		
Flanged ASME B16.5 Class 300							V		
<b>Size</b>									
11/2" or DN 40								40	
2" or DN 50								50	
<b>Special construction / Additional options</b>									
Full description or additional codes have to be added in case of a non-standard combination									E