

INVERTED BUCKET STEAM TRAPS IB30 (1 1/2" – 2"; DN 40 – DN 50)

DESCRIPTION

The IB30 series inverted bucket steam traps are recommended for applications where the most important requirements are overall operating efficiency and long, trouble-free service life.

They operate intermittently, either wide open or tightly closed and are, therefore, best suited for medium and high steam pressure applications.

MAIN FEATURES

- Intermittent discharge.
- Discharges condensate at steam temperature.
- Unaffected by water hammer and vibrations.
- Easy to maintain.

USE: Saturated and superheated steam.

AVAILABLE MODELS: IB30S-4, 8 and 12 – carbon steel.

SIZES: 1 1/2" to 2"; DN 40 to DN 50.

CONNECTIONS: Female threaded ISO 7 Rp or NPT.
Flanged EN 1092-1 PN 25
Flanged ASME B16.5 Class 150 or 300.
Socket weld (SW) ASME 16.11.
Butt weld (BW) ASME B16.25 on request.

INSTALLATION: Vertical installation.
See IMI – Installation and maintenance instructions.

MAX. ΔP: IB30S-4 – 4 bar
IB30S-8 – 8 bar
IB30S-12 – 12 bar



BODY LIMITING CONDITIONS

FLANGED PN 25 / CLASS 300 *	FLANGED CLASS 150 **	RELATED TEMPERATURE
ALLOWABLE PRESSURE	ALLOWABLE PRESSURE	
23,2 bar	15,4 bar	100 °C
20,8 bar	13,8 bar	200 °C
19 bar	12,1 bar	250 °C
17,2 bar	10,2 bar	300 °C

PMO – Maximum operating pressure: 17 bar;

TMO – Maximum operating temperature: 220 °C.

* Acc. to EN 1092-1:2018; ** Acc. to EN 1759-1:2004.

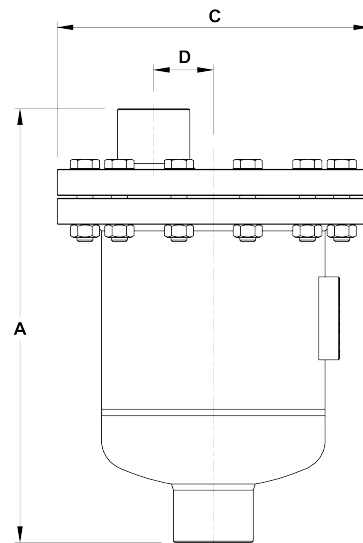
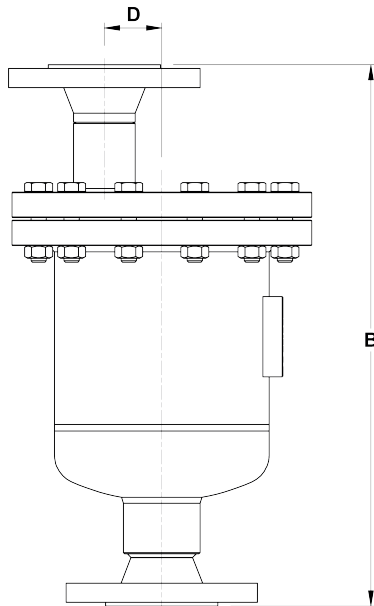
Body limiting conditions PN 25 or below, depending on the type of connection adopted. Rating PN 25 for threaded, SW and BW versions.

CE MARKING – GROUP 2 (PED – European Directive)

PN 25	Category
1 1/2" to 2" DN 40 to 50	1 (CE marked)

FLOW RATE CAPACITY (kg/h)

MODEL	SIZE	DIFFERENTIAL PRESSURE (bar)										
		1	2	3	4	5	6	7	8	10	11	12
IB30S-4	1 1/2" to 2" DN 40 to 50	2200	2770	3220	3570	–	–	–	–	–	–	–
IB30S-8	1 1/2" to 2" DN 40 to 50	1850	2200	2560	2800	3070	3300	3500	3700	–	–	–
IB30S-12	1 1/2" to 2" DN 40 to 50	1150	1500	1720	1880	2050	2200	2325	2470	2670	2820	2900



DIMENSIONS (mm)

SIZE	THREADED / SW				PN 25		CLASS 150		CLASS 300	
	A	C	D	WEIGHT (kg)	B	WEIGHT (kg)	B	WEIGHT (kg)	B	WEIGHT (kg)
1 1/2" – DN 40	330	235	45	17,5	425	21,6	442	21,3	448	23,4
2" – DN 50	338	235	45	18	428	23,5	444	23,6	450	24,9

MATERIALS

POS. N°	DESIGNATION	MATERIAL
1	Body	S355JR / 1.0045
2	Cover	P235GH / 1.0345
3	* Gasket	Graphite
4	* Seat	AISI 420 / 1.4021
5	* Valve	AISI 420 / 1.4021
6	* Lever	AISI 304 / 1.4301
7	* Bucket	AISI 304 / 1.4301
8	Inlet tube	P235GH / 1.0345
9	Bolts	Steel 8.8

* Available spare parts.

