

INVERTED BUCKET STEAM TRAPS IB30 (1 1/2" and 2" – DN 40 and DN 50)

DESCRIPTION

The IB30 is a series of general purpose robust and versatile inverted bucket steam traps manufactured in carbon steel.

These steam traps operate intermittently and are suitable for use with saturated or superheated steam.

Typical applications include dryers, heat exchangers, heating coils, chemical and laundry equipment where high flow capacities are involved.

MAIN FEATURES

Intermittent discharge.

Discharges condensate at steam temperature.

Unaffected by water hammer and vibrations.

Easy to maintain.

USE: Saturated and superheated steam.

AVAILABLE

MODELS: IB30S-4, 8 and 12 – carbon steel.

SIZES: 1 1/2" and 2"; DN 40 and DN 50.

CONNECTIONS: Female threaded ISO 7 Rp or NPT.
Flanged EN 1092-1 PN 25
Flanged ASME B16.5 Class 150 or 300.
Socket weld (SW) ASME 16.11.
Butt weld (BW) ASME B16.25 on request.

INSTALLATION: Vertical installation.
See IMI – Installation and maintenance instructions.

ΔPMX: IB30S-4 – 4 bar
IB30S-8 – 8 bar
IB30S-12 – 12 bar



| CE MARKING – GROUP 2 (PED – European Directive) | |
|--|---------------|
| PN 25 | Category |
| 1 1/2" and 2" DN 40 and 50 | 1 (CE marked) |

| BODY LIMITING CONDITIONS | | |
|--------------------------------|-------------------------|------------------------|
| FLANGED PN 25 / CLASS 300 * | FLANGED CLASS 150 ** | RELATED TEMPERATURE |
| ALLOWABLE PRESSURE | ALLOWABLE PRESSURE | |
| 23,2 bar | 15,4 bar | 100 °C |
| 20,8 bar | 13,8 bar | 200 °C |
| 19 bar | 12,1 bar | 250 °C |
| 17,2 bar | 10,2 bar | 300 °C |

PMO – Maximum operating pressure: 17 bar.

TMO – Maximum operating temperature: 220 °C.

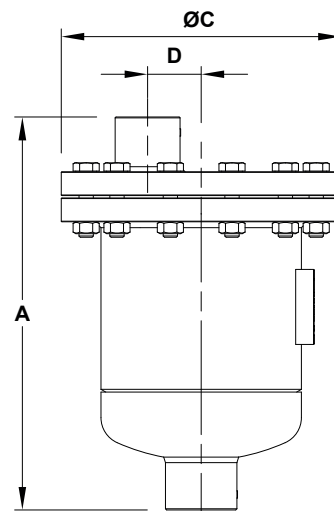
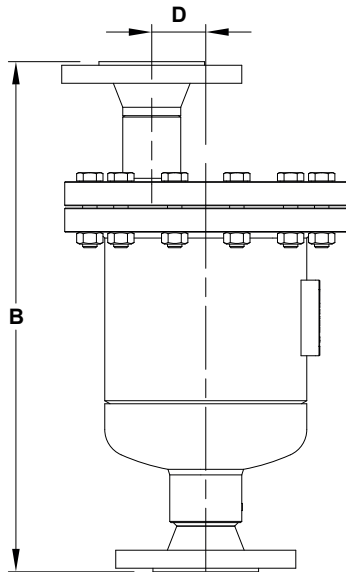
* According to EN 1092-1:2018.

** According to EN 1759-1:2004.

Body limiting conditions PN 25 or below, depending on the type of connection adopted. Rating PN 25 for threaded, SW and BW versions.

FLOW RATE CAPACITY (kg/h)

| MODEL | SIZE | DIFFERENTIAL PRESSURE (bar) | | | | | | | | | | |
|----------|-------------------------------|-----------------------------|------|------|------|------|------|------|------|------|------|------|
| | | 1 | 2 | 3 | 4 | 5 | 6 | 7 | 8 | 10 | 11 | 12 |
| IB30S-4 | 1 1/2" and 2" DN 40 and 50 | 2200 | 2770 | 3220 | 3570 | - | - | - | - | - | - | - |
| IB30S-8 | 1 1/2" and 2" DN 40 and 50 | 1850 | 2200 | 2560 | 2800 | 3070 | 3300 | 3500 | 3700 | - | - | - |
| IB30S-12 | 1 1/2" and 2" DN 40 and 50 | 1150 | 1500 | 1720 | 1880 | 2050 | 2200 | 2325 | 2470 | 2670 | 2820 | 2900 |



DIMENSIONS (mm)

| SIZE | THREADED / SW | | | | PN 25 | | CLASS 150 | | CLASS 300 | |
|----------------|---------------|-----|----|-------------|-------|-------------|-----------|-------------|-----------|-------------|
| | A | ØC | D | WEIGHT (kg) | B | WEIGHT (kg) | B | WEIGHT (kg) | B | WEIGHT (kg) |
| 1 1/2" - DN 40 | 330 | 235 | 45 | 17,5 | 425 | 21,6 | 442 | 21,3 | 448 | 23,4 |
| 2" - DN 50 | 338 | 235 | 45 | 18 | 428 | 23,5 | 444 | 23,6 | 450 | 24,9 |

MATERIALS

| POS. N° | DESIGNATION | MATERIAL |
|---------|-------------------|----------------------------|
| 1 | Body | S355JR / 1.0045 |
| 2 | Cover | P235GH / 1.0345 |
| 3 | * Gasket | Stainless steel / Graphite |
| 4 | * Seat | Hardened stainless steel |
| 5 | * Valve | Hardened stainless steel |
| 6 | * Lever mechanism | AISI 304 / 1.4301 |
| 7 | * Bucket | AISI 304 / 1.4301 |
| 8 | Bolts | Steel 8.8 |

* Available spare parts.

