

STEAM INJECTORS SI115

DESCRIPTION

The ADCAMix SI115 is a series of direct steam injectors designed for rapid heating of still or flowing mediums, inside basins and vessels. Steam enters through the inlet connection, passes along the center of the device and mixes with the cool medium, which is drawn in through radial holes.

MAIN FEATURES

Quiet operation.
Corrosion-resistant stainless steel construction.
No moving parts.

OPTIONS: Complete system including vacuum breaker and self-acting temperature regulator.
Different capacities and designs available under request.

USE: Heating via direct steam injection.

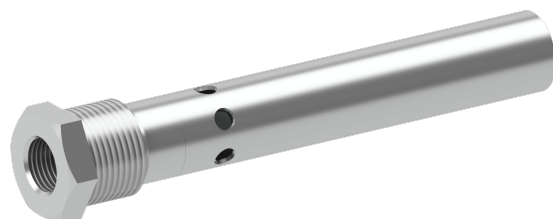
AVAILABLE MODELS: SI115.

SIZES: 1/2".

MATERIAL: AISI 316 / 1.4401.

CONNECTIONS: Female threaded ISO 7 Rp.
Others on request.

INSTALLATION: Horizontal installation.
See IMI – Installation and maintenance instructions.



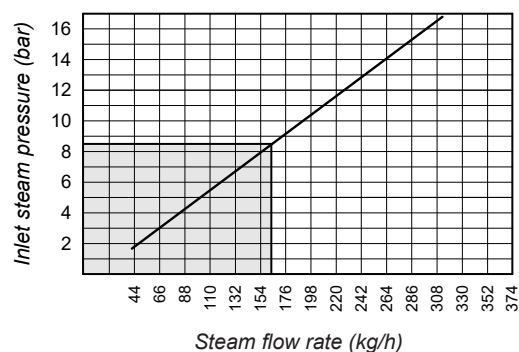
CE MARKING – GROUP 2 (PED – European Directive)

PN 25	Category
1/2"	SEP

LIMITING CONDITIONS

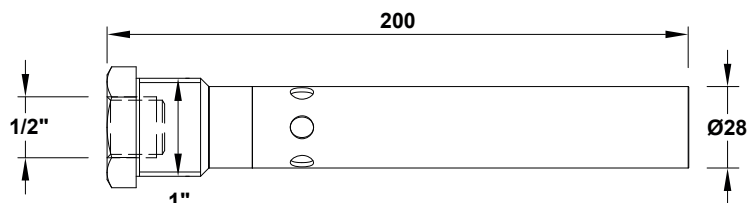
Body design conditions	PN 25
Maximum operating pressure	17 bar
Maximum operating temperature	95 °C

CAPACITY CHART (With vessel at atmospheric pressure)



Remark: Selection under shadowed area is recommended for the quietest operation.

DIMENSIONS (mm)



HOW TO SIZE

Example

Application requires injection of 230 kg/h of saturated steam, which is readily available at a pressure of 5,5 bar. From the capacity chart, the injector will process 110 kg/h at 5,5 bar, and 230 divided by 110 equals 2,09. Two injectors will barely cope, so it is recommended to install three ADCAMix SI115 injectors, to safely meet the demand.