

PRESSURE GAUGES MAN-100

DESCRIPTION

The ADCA MAN-100 are reliable and cost-effective, general purpose bourdon tube pressure gauges designed for pressure measurement of liquid and gaseous media. They have a nominal size diameter of 100mm, units marked in bar and their casing is fully manufactured from stainless steel.

MAIN FEATURES

Designed according to EN 837-1.
Bottom connection.

OPTIONS: Backside centric connection.
Complete stainless steel construction.

USE: Non-viscous and non-crystallizing liquids and gases compatible with copper alloy.

AVAILABLE MODELS: MAN-100.

SIZES: 1/2"

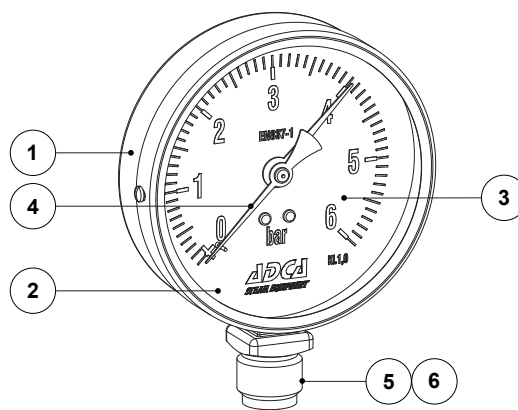
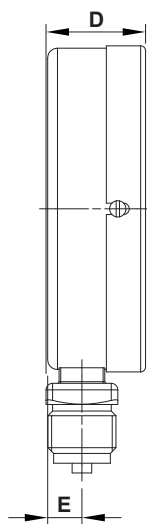
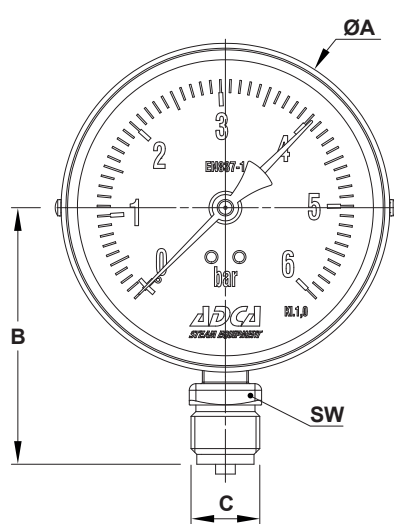
CONNECTIONS: ISO 228.

MEASURING RANGES: 0 to 2,5 bar; 0 to 4 bar; 0 to 6 bar; 0 to 10 bar;
0 to 16 bar; 0 to 25 bar; 0 to 40 bar.



LIMITING CONDITIONS

Accuracy	±1% FS
IP rating	IP 43
Maximum allowable pressure	Full scale reading
Maximum operating temperature	110 °C
Ambient temperature	-10 to 60 °C



DIMENSIONS (mm)

SIZE	ØA	B	C	D	E	SW	WEIGHT (kg)
1/2"	100	78	1/2"	31	10,5	22	0,3

MATERIALS

POS. N°	DESIGNATION	MATERIAL	POS. N°	DESIGNATION	MATERIAL
1	Case and bezel ring	AISI 304 / 1.4301	4	Pointer	Black aluminium
2	Window	Glass	5	Connection	Brass
3	Dial	White aluminium	6	Measuring system	Copper alloy