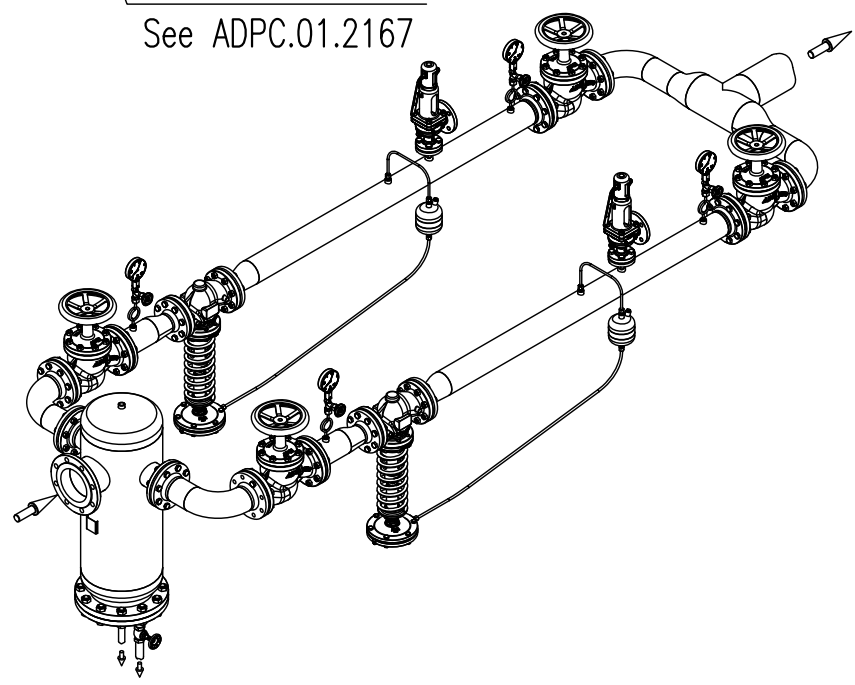


STEAM TRAP INSTALATION
See ADPC.01.2167



DIMENSIONS (mm)	
A	_____
B	_____
C	_____

* See IS catalogue

Ref.	Quant.	Deseignation / Designação	Size/Medidas	Material	Remarks / Observações
8.1	02	ADCA MAN-100 Pressure gauge	DN_____	_____	Range _____ - _____ bar
08	02	ADCA MAN-100 Pressure gauge	DN_____	_____	Range _____ - _____ bar
07	04	ADCA GC-400 Gauge Cock	DN_____	_____	---
06	04	ADCA GSC-40 Gauge siphon	DN_____	_____	---
05	01	Safety valve	DN_____	_____	Spring _____
4.1	02	ADCA VF 16 Globe valve	DN_____	_____	---
04	04	ADCA VF 16 Globe valve	DN_____	_____	---
02	01	ADCA S252F Humidify separator/Strainer	DN_ x _ x _	_____	---
01	02	ADCA ADCA RP45 Pressure reducing valve	DN_____	_____*	---

Data Rubrica		VALSTEAM ADCA	Proc.	0.490
Proj.	11/03/07 F.Soares		---	
Des.	11/03/07 Paulo S.		---	
Verif.			---	
Escalas	Tolerâncias / especificações	PRESSURE REDUCING VALVE STATION CONJUNTO REDUTOR ARMADO RP45 TW	Des.N°:	
	Dimensões Desvios		ADCR.05.4805	
			Rev:	00 Em: 00/00/00