

BIMETALLIC STEAM TRAPS AND AIR VENTS BM80

DESCRIPTION

The BM80 series bimetallic steam traps and air vents are simple and robust traps, recommended for steam process applications where condensate sensible heat can be recovered, steam tracing lines, drip points, storage tank coils, steam air venting, etc. The use of condensate sensible heat reduces steam consumption.

MAIN FEATURES

- Modulating discharge.
- Discharges condensate below steam temperature.
- Excellent air discharge.
- Operates on superheated steam.
- Unaffected by water hammer and vibrations.
- Built-in strainer.

USE: Saturated and superheated steam.

AVAILABLE MODELS: BM80.

SIZES: 1/2" to 1"; DN 15 to DN 25.

CONNECTIONS: Female threaded ISO 7 Rp or NPT.
Flanged EN 1092-1 PN 100.
Flanged ASME B16.5 Class 600.
Socket weld (SW) ASME B16.11.
Butt weld (BW) ASME B16.25.

INSTALLATION: Horizontal installation recommended, can be installed in any position.
See IMI – Installation and maintenance instructions.



CE MARKING – GROUP 2 (PED – European Directive)

PN 100	Category
1/2" to 1" – DN 15 to 25	SEP

FLOW RATE CAPACITY (kg/h)

MODEL	SIZE	DIFFERENTIAL PRESSURE (bar)									
		25	30	35	40	45	50	55	60	70	80
BM80	1/2" to 1" A DN 15 to 25 A	500	550	570	580	590	600	610	620	630	650
BM80	1/2" to 1" B DN 15 to 25 B	3000	3200	3600	4000	4200	4700	5000	5400	6000	6200

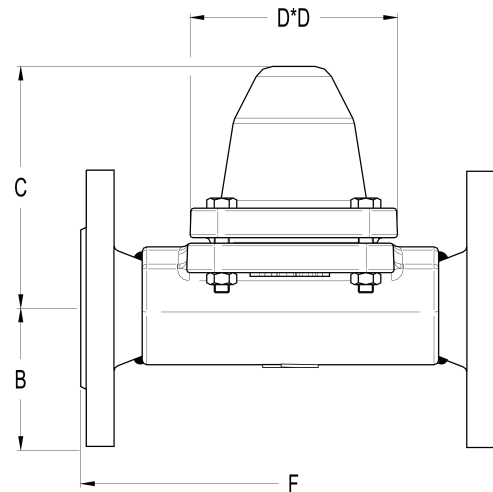
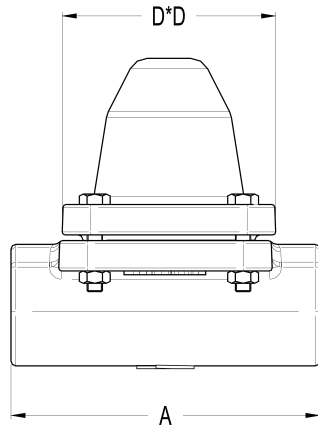
A: Condensate discharge at 10 °C below saturation temperature; B: Cold water capacity around 20 °C.

BODY LIMITING CONDITIONS		
FLANGED PN 100 *	FLANGED CLASS 600 **	RELATED TEMP.
ALLOWABLE PRESSURE	ALLOWABLE PRESSURE	
100 bar	100 bar	50 °C
100 bar	92,7 bar	250 °C
98 bar	80,4 bar	350 °C
88 bar	67,7 bar	450 °C

Operating pressure: 25 to 80 bar.

* Acc. to EN 1092-1:2018. ** Acc. to EN 1759-1:2004.

Body limiting conditions PN 100 or below, depending on the type of connection adopted. Rating PN 100 for threaded, SW and BW versions.



DIMENSIONS (mm)

SIZE	THREADED / SW / BW				PN 100			CLASS 600		
	A	C	D	WEIGHT (kg)	B	F *	WEIGHT (kg)	B	F *	WEIGHT (kg)
1/2" – DN 15	160	120	115	6,3	52,5	230	8,8	47,5	230	8,2
3/4" – DN 20	160	120	115	6,3	65	230	11,1	59	230	9,4
1" – DN 25	160	120	115	6,3	70	230	11,8	62	230	10,2

* Different face to face dimensions on request.

MATERIALS

POS. N°	DESIGNATION	MATERIAL
1	Body	A182F22 / 1.7380 (Equiv. 10CrMo910)
2	Cover	A182F22 / 1.7380 (Equiv. 10CrMo910)
3	* Gasket	Stainless steel / Graphite
4	* Valve assembly	Hardened stainless steel
5	* Strainer screen	AISI 304 / 1.4301
6	* Seat gasket	AISI 304 / 1.4301
7	Studs	A193 Gr. B7
7A	Nuts	A194 Gr. 2H

* Available spare parts.

