

## FLOAT AND THERMOSTATIC STEAM TRAPS FLT22/TW

### DESCRIPTION

The FLT22/TW float and thermostatic (integral air vent) steam traps series are designed for all types of low and high pressure steam heating and process equipment.

Typical applications include unit heaters, heat exchangers, driers, jacketed vessels and all the applications where continuous drainage is essential.

### MAIN FEATURES

- Modulating discharge.
- Discharges condensate at steam temperature.
- Unaffected by sudden or wide load and pressure changes.
- Excellent air discharge (by thermostatic air vent).

USE: Saturated and superheated steam.

### AVAILABLE

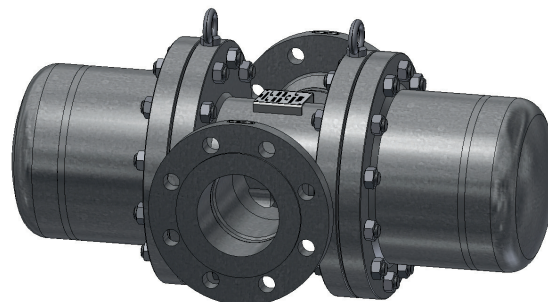
MODELS: FLT22S/TW-4,5 , 10, 14 and 21 – carbon steel.  
FLT22SS/TW-4,5 , 10, 14 and 21 – stainless steel.

SIZES: 3" to 4"; DN 80 to DN 100.

CONNECTIONS: Flanged EN 1092-1 PN 16 or PN 25.  
Flanged ASME B16.5 Class 150 or 300.

INSTALLATION: Standard horizontal installation.  
Vertical on request.  
See IMI – Installation and maintenance instructions.

MAX. ΔP: FLT22S/TW-4,5 – 4,5 bar  
FLT22S/TW-10 – 10 bar  
FLT22S/TW-14 – 14 bar  
FLT22S/TW-21 – 21 bar  
Remark: the same figures are valid for the FLT22SS/TW.



### CE MARKING – GROUP 2 (PED – European Directive)

PN 16	PN 25	Category
3" to 4" DN 80 to 100	–	1 (CE marked)
–	3" to 4" DN 80 to 100	2 (CE marked)

### FLOW RATE CAPACITY (kg/h)

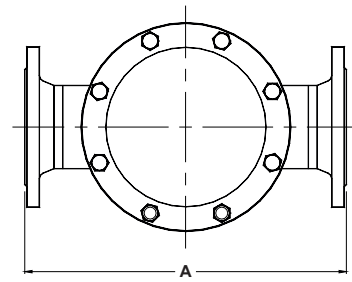
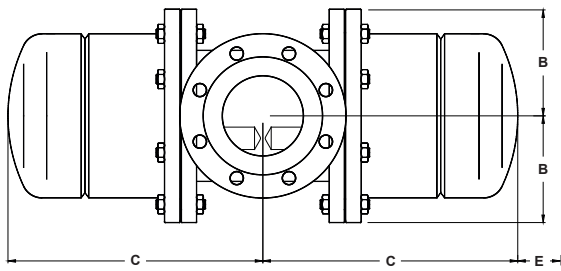
MODEL	SIZE	DIFFERENTIAL PRESSURE (bar)										
		0,5	0,7	1	1,5	2	4,5	7	10	14	16	21
FLT22S/TW-4,5	3" to 4" – DN 80 to 100	15100	18100	22000	28000	31000	45000	–	–	–	–	–
FLT22S/TW-10	3" to 4" – DN 80 to 100	7800	8900	10000	12200	14200	20000	27500	32000	–	–	–
FLT22S/TW-14	3" to 4" – DN 80 to 100	3800	4600	5400	6200	7200	10000	13800	16200	19600	–	–
FLT22S/TW-21	3" to 4" – DN 80 to 100	3800	4600	5400	6200	7200	10000	13800	16200	19600	20000	24100

Remark: the same figures are valid for the FLT22SS/TW.

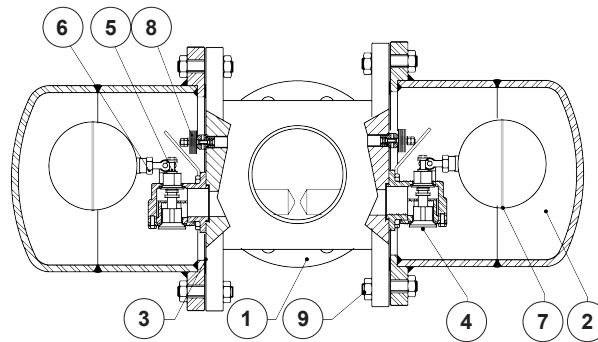
BODY LIMITING CONDITIONS						
FLT22S/TW			FLT22SS/TW			RELATED TEMPERATURE
FLANGED PN 16 *	FLANGED CLASS 150 **	FLANGED PN 25 / CLASS 300 *	FLANGED PN 16 *	FLANGED CLASS 150 **	FLANGED PN 25 / CLASS 300 *	
ALLOW. PRESS.	ALLOW. PRESS.	ALLOW. PRESS.	ALLOW. PRESS.	ALLOW. PRESS.	ALLOW. PRESS.	
16 bar	15,4 bar	23,2 bar	15 bar	15,3 bar	23,6 bar	100 °C
13,3 bar	13,8 bar	20,8 bar	12,7 bar	11,1 bar	19,8 bar	200 °C
12,1 bar	12,1 bar	19 bar	12 bar	10,2 bar	18,6 bar	250 °C
11 bar	10,2 bar	17,2 bar	11 bar	9,7 bar	17,2 bar	300 °C

PMO – Maximum operating pressure: 21 bar; TMO – Maximum operating temperature: 250 °C.

\* Acc. to EN 1092-1:2018; \*\* Acc. to EN 1759-1:2004. Body limiting conditions PN 25 or below, depending on the type of connection adopted.



DIMENSIONS (mm)															
SIZE	PN 25					CLASS 150					CLASS 300				
	A	B	C	E	WGT. (kg)	A	B	C	E	WGT. (kg)	A	B	C	E	WGT. (kg)
3" – DN 80	440	155	345	235	110	463	155	235	235	110	482	155	345	235	110
4" – DN 100	440	155	345	235	115	463	155	235	235	115	482	155	345	235	115



MATERIALS			
POS. N°	DESIGNATION	FLT22S/TW	FLT22SS/TW
1	Body	P250GH / 1.0460 P235GH / 1.0345 S355JR / 1.0045 S235JR / 1.0038	AISI 316 / 1.4401 AISI 304 / 1.4301
2	Cover	P235GH / 1.0345 P265GH / 1.0425 S355JR / 1.0045	AISI 316 / 1.4401 AISI 304 / 1.4301
3	* Gasket	Graphite	Graphite
4	* Seat	A351 CF8 / 1.4308	A351 CF8 / 1.4308
5	* Valve	AISI 420 / 1.4021	AISI 420 / 1.4021
6	* Lever	AISI 304 / 1.4301	AISI 304 / 1.4301
7	* Float	AISI 304 / 1.4301	AISI 304 / 1.4301
8	* Air vent	Stainless steel (bimetallic)	Stainless steel (bimetallic)
9	Bolts	Steel 8.8	Stainless steel A2-70

\* Available spare parts.