

SINGLE WINDOW SIGHT GLASS SW12

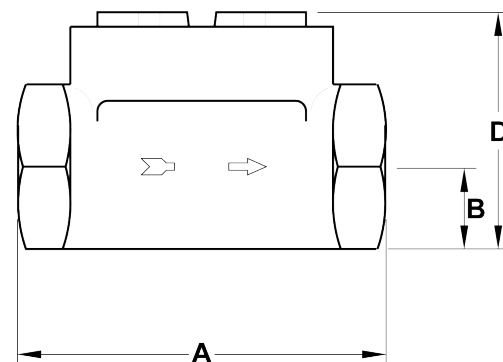
DESCRIPTION

For monitoring the right operation of a steam trap, in order to avoid leakages of live steam and, consequently, great energy losses, a sight glass is recommended to be installed downstream of the steam trap. The single window SW12 sight glasses have been designed for this particular application.

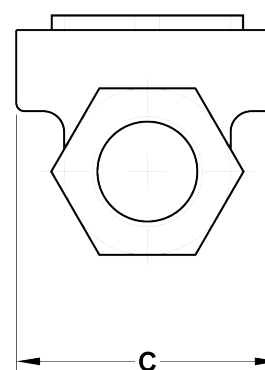
- OPTIONS:** Mica shield discs for use with steam.
- USE:** Condensate pipes, downstream of the steam traps.
- AVAILABLE MODELS:** SW12 – 5 mm thick glass.
- SIZES:** 1/2" to 1".
- CONNECTIONS:** Female threaded ISO 7 Rp or NPT.
- INSTALLATION:** Horizontal or vertical installation.
See IMI – Installation and maintenance instructions.



LIMITING CONDITIONS	
PMO – Maximum operating pressure	12 bar
TMO – Maximum operating temperature	150 °C



DIMENSIONS (mm)					
SIZE	A	B	C	D	WEIGHT (kg)
1/2"	80	16	62	52	0,6
3/4"	88	19	62	57	0,9
1"	88	23	62	60	0,85



MATERIALS		
POS. N°	DESIGNATION	MATERIAL
1	Body	Brass EN12165 / CuZn39Pb2
2	Glass nut	Brass EN12165 / CuZn39Pb2
3	* Gasket	Stainless steel / Graphite
4	* Window glass	Tempered borosilicate glass

* Available spare parts.

